



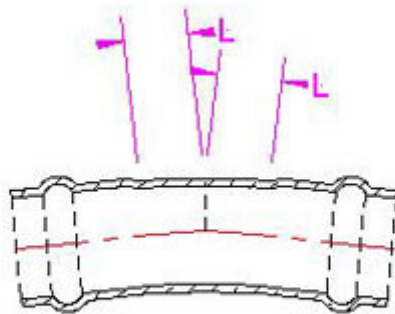
AL SAAD CO

ENGINEERING CONSULTING

Ductile Iron Fittings to suit Metric PVC Pipe

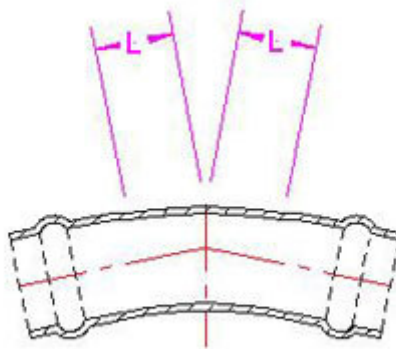
11¼° Double Socket Bend MMK-KS 11 (Class K12)

Nominal Bore	Dimensions	Weight
mm	L mm	Kgs.
63	20	3
75	25	4
90	7	5
110	12	6
125	13	8
140	14	9
160	15	11
200	19	18
225	30	24
250	50	27
260	55	38
315	60	49



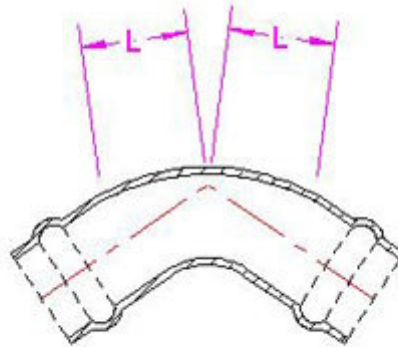
22½° Double Socket Bend MMK-KS 22 (Class K12)

Nominal Bore	Dimensions	Weight
mm	L mm	Kgs.
63	20	3
75	25	4
90	18	5
110	22	6
125	24	7
140	28	9
160	31	12
200	39	16
225	30	24
250	75	34
280	80	37
315	85	51



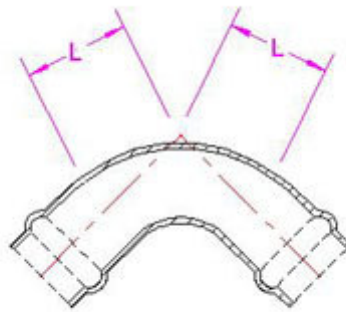
45° Double Socket Bend MMK-KS 45 (Class K12)

Nominal Bore	Dimensions	Weight
mm	L mm	Kgs.
63	40	3
75	50	4
90	33	5
110	41	7
125	48	8
140	55	10
160	60	13
200	85	19
225	60	24
250	130	39
280	140	40
315	150	58



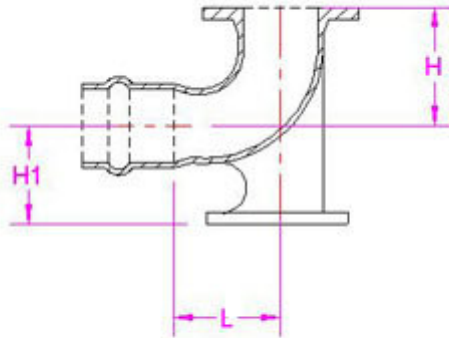
90° Double Socket Bend MMK-KS 90 (Class K12)

Nominal Bore	Dimensions	Weight
mm	L mm	Kgs.
63	60	3
75	65	5
90	80	6
110	95	8
125	110	11
140	135	13
160	145	17
200	195	27
225	320	42
250	270	43
280	300	48
315	320	66



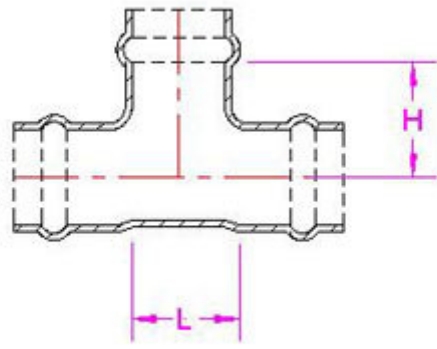
90° Hydrant Duckfoot Bend EN-KS (Class K12)

Flange	Pipe O/D	Dimensions			Weight
NB mm	mm	L mm	H1 mm	H mm	Kgs.
80	90	140	108	290	12
80	110	165	120	300	15
80	140	185	110	305	19
80	160	123	130	310	21



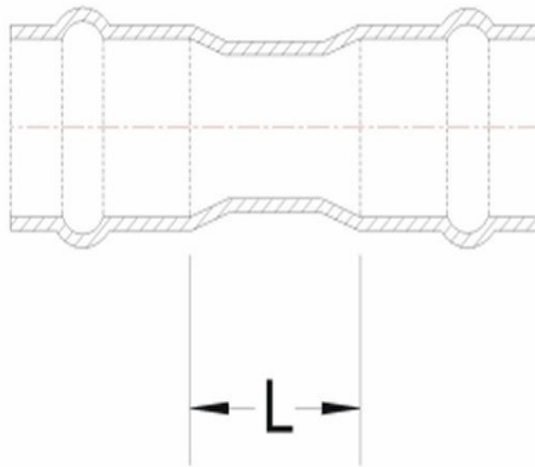
All Socket Tee MMB-KS (Class K14)

Nominal Bore		Dimensions		Weight
Body	Branch			
mm	mm	L mm	H mm	Kgs.
63	63	70	127	5
75	75	84	140	6
90	63	76	142	7
90	90	101	164	9
110	63	81	150	7
110	75	92	156	8
110	90	106	156	8
110	110	124	180	9
140	110	130	184	14
140	140	157	206	17
160	63	93	181	11
160	75	104	188	11
160	90	118	191	12
160	110	136	197	14
160	160	181	228	17
200	90	95	216	20
200	110	112	220	20
200	160	160	253	23
200	200	210	255	28
225	75	110	220	24
225	90	130	222	26
225	110	148	226	27
225	160	193	257	32
225	225	252	284	40
250	90	142	241	44
250	110	160	234	46
250	160	205	266	52
250	200	250	268	44
250	225	260	310	49
250	250	280	332	51
280	90	142	256	33
280	110	160	269	34
280	160	205	295	41
280	225	264	325	44
280	280	314	359	48
315	90	154	262	37
315	110	172	267	38
315	160	217	299	43
315	315	357	379	63



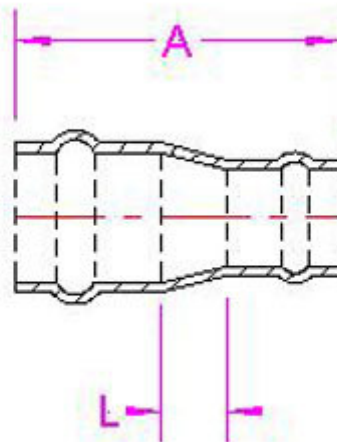
Double Socket Collar MMI-KS (Class K12)

PVC O/O	Dimensions	Weight
mm	L mm	Kgs.
63	68	5
75	71	7
90	74	9
110	79	10
140	85	13
160	91	16
225	103	21
280	115	33
315	127	45



Double Socket Taper MMR-KS (Class K12)

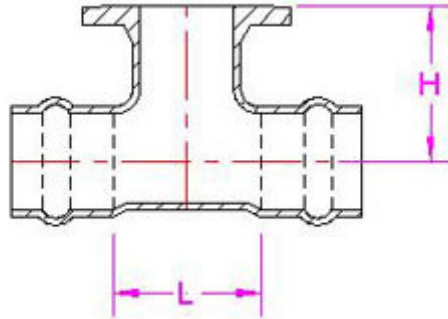
Tapering		Dimensions	Weight
From	To		
NB mm	NB mm	L mm	Kgs.
90	63	28	5
110	75	36	5
110	90	31	7
140	110	41	8
160	75	43	7
160	90	44	8
160	110	53	8
160	140	42	13
200	110	84	13
200	160	71	15
225	110	84	16
225	160	71	17
250	160	102	21
250	200	79	26
250	225	72	28
315	225	110	33
315	280	82	38



Double Socket Tee with Flanged Branch MMA-KS (Class K14)

Nominal Bore		Dimensions		Weight
Body	Branch			
mm	mm	L mm	H mm	Kgs.
63	50	63	140	7
75	60	81	140	8
90	50	69	160	10
90	60	99	161	11
110	50	74	170	11
110	60	89	175	10
110	80	104	172	12
110	100	124	172	13
125	50	74	160	14
125	60	90	160	15
125	80	117	170	16
125	100	135	180	17
125	125	155	180	21
140	50	80	176	15
140	60	95	203	16
140	80	110	187	17
140	100	139	197	17
140	125	155	205	22
160	50	82	200	13
160	60	99	214	15
160	80	116	100	20
160	100	136	208	22
160	150	186	218	29
200	80	128	223	27
200	100	150	240	29
200	125	173	233	31
200	150	243	273	34
200	200	240	280	40
225	60	99	251	27
225	80	128	251	28
225	100	148	251	29
225	150	198	251	36
225	200	248	251	40
250	80	140	250	37
250	100	160	255	38
250	150	210	265	43
250	200	260	275	56
250	250	310	285	66
280	80	140	282	35
280	100	160	288	35
280	150	210	288	45
280	200	260	285	55
280	250	310	287	62
315	80	152	305	51

315	100	172	309	47
315	150	222	309	55
315	200	272	292	77

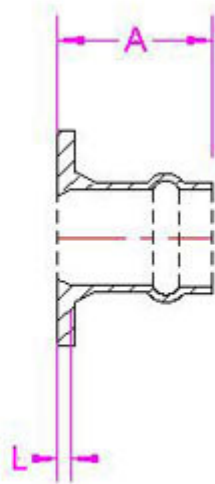


End Cap EX-KS (Class K12)

PVC O/D	Weight
mm	Kgs.
63	3
90	4
110	4
160	6
200	9
225	12
280	15
315	21

Flange Socket Piece E-KS (Class K12)

Nominal Bore		Dimensions	Weight
Flange	Socket		
mm	mm	L mm	Kgs.
50	63	58	3
60	63	59	4
60	75	60	5
65	75	60	5
80	90	61	5
100	110	64	6
125	140	68	8
150	160	71	10
200	200	75	16
200	225	78	16
250	250	81	28
250	280	85	24
300	315	88	35
400	400	95	72



Flange Spigot Piece F-KS (Class K12)

Nominal Bore		Dimensions	Weight
Flange	Spigot		
mm	mm	L mm	Kgs.
50	63	93	4
65	75	98	5
80	90	102	5
100	110	110	7
125	140	119	10
150	160	127	10
200	200	133	15
200	225	139	17
250	250	152	25
250	280	166	28
300	315	176	37

